

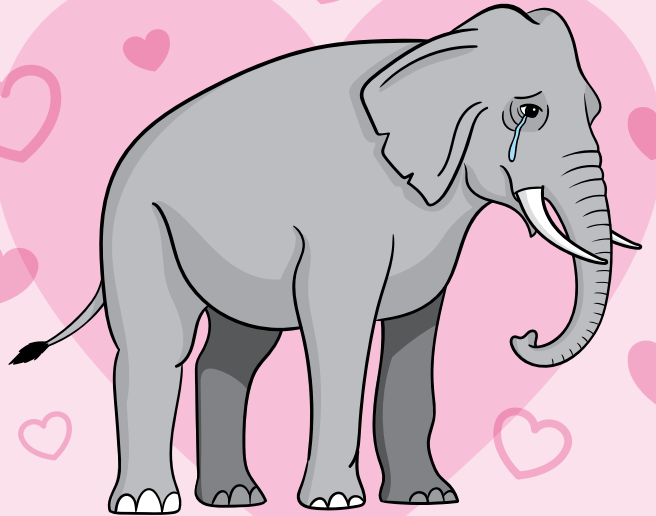
Betty was torn away from her home and family in Thailand as an infant over five decades ago and has been exploited for human entertainment ever since. She's forced to perform confusing and often painful circus tricks and denied everything that's natural and important to her. Please show Betty some 🌸 and compassion, by retiring her to a true sanctuary, where she could have some semblance of a natural life free from forced performances.

FOLD HERE

peta2

FOLD HERE

Show Betty Some ❤️



This Valentine's Day
peta2